

How to Best Use IT in Basic Research

Samantha Smith
Cancer Therapeutics CRC



Cooperative Research Centers (CRCs)

- Australian Government initiative, started 1991

Typical Model

- A company formed through a collaboration of businesses & researchers
- Focus R&D efforts on progress towards utilisation and commercialisation



Cancer Therapeutics (CTx) CRC

The Funding

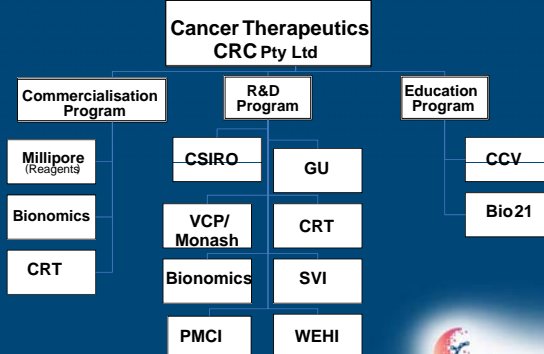
- A\$148 million, 7 yrs
- A\$38m CRC Program & A\$110m CTx partners

The Focus

Discover and develop small molecular pre-clinical drug candidates for the treatment of cancer



CTx Organisation

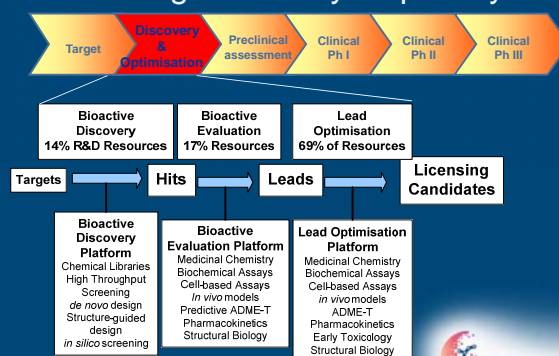


Organisation of Core Platforms

	HTS	Structural Biology	Medicinal Chemistry	DMPK	Animal Models	Translational Cancer Biology	Protein Expression
Bionomics	✓		✓		✓	✓	
CRT	✓		✓			✓	
CSIRO		✓	✓				✓
Griffith University	✓	✓	✓				
PMCI					✓	✓	
VCP/Monash			✓	✓			
SVI		✓				✓	
WEHI	✓		✓		✓	✓	



Our Drug Discovery Capability



ADME-T Absorption, Distribution, Metabolism, Excretion, Toxicity



2. Centric

- Web-based document management system which functions as an intranet
- Transparency of information and access to key documentation
- Generic & project specific



3. ELN

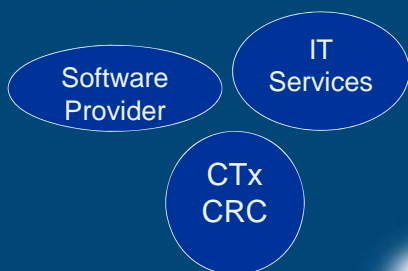
Why does electronic make sense for CTx?

- Centralised data capture
- Searchable - IP purposes

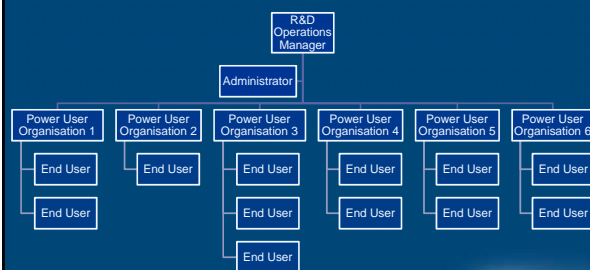
CTx CRC is one of the first organisations in Australia to implement an ELN system



Definition Phase



Operational Structure

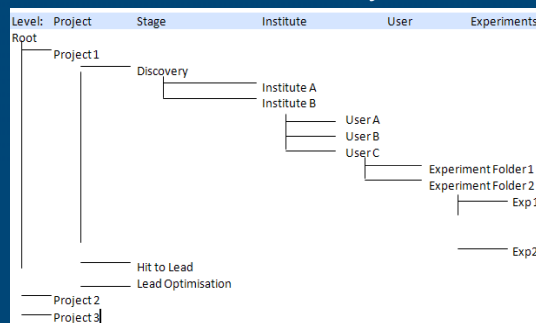


Marketing the Advantages to the User

Paper	Electronic
Limited access to Project experiments by more than one project team member at one time	Project experiments are accessible on-line to all members of the project team
Print-out and pasting of data analysis sheets into notebook	Data analysis either done in or imported directly into notebook
Manual searching, filtering and archiving	Automatic searching, filtering and archiving
Each notebook page to be signed & co-signed /witnessed	Each experiment to be signed & co-signed /witnessed



ELN Hierarchy



Any questions?

samantha@cancercrc.com

www.cancercrc.com

